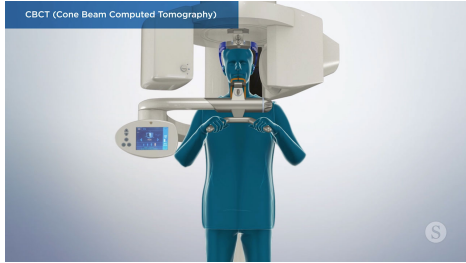
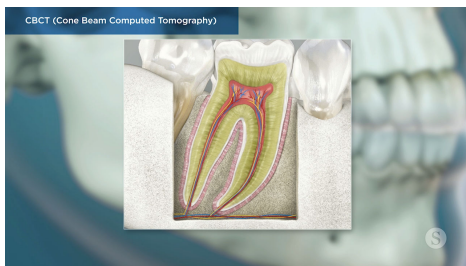


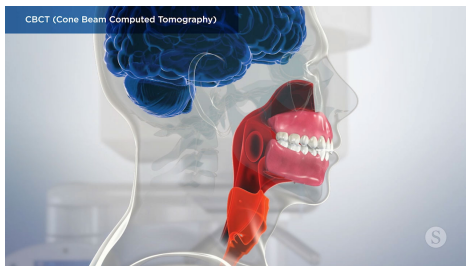
CBCT (Cone Beam Computed Tomography)



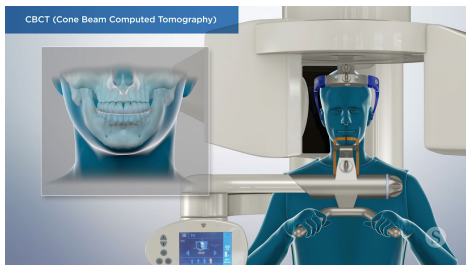
Cone Beam Computed Tomography, or CBCT, is a specialized imaging device that uses a rotating cone-shaped x-ray beam to create a 3D view of the inner anatomy of your head and face.



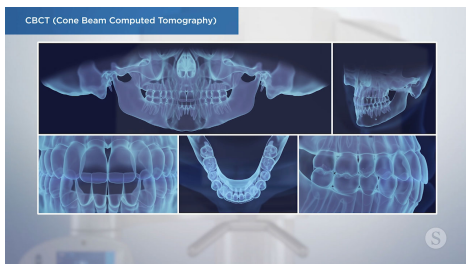
CBCT scans are usually recommended by your doctor in situations where more diagnostic information is needed than a standard dental x-ray can provide. It enables them to visualize your bone structure, tooth position, soft tissues, and nerve pathways in detail.



Because of the level of detail provided, CBCT scans have several clinical applications, including: TMJ and skeletal evaluation, dental implant planning, airway examination, assessment of abnormal teeth, measurement of dental tumors, and more.



To capture the CBCT scan, the scanning arm rotates around the patient's head and captures several exposures that are reconstructed into a single 3-D image. The process typically takes a minute or less to complete.



Once completed, the images are processed and analyzed, and your doctor will use the information gained to plan the best course of care for you.

